

PROJECT DETAILS	
REQ BY	-
DEALER	-
QUOTE NUMBER	-
PROJECT NAME	-
SCREEN MATERIAL	-
PERF FOR SOUND	NA
CASE COLOR	WHITE
BATTEN COLOR	BLACK
APPROX WEIGHT	76 lbs

Signature _____

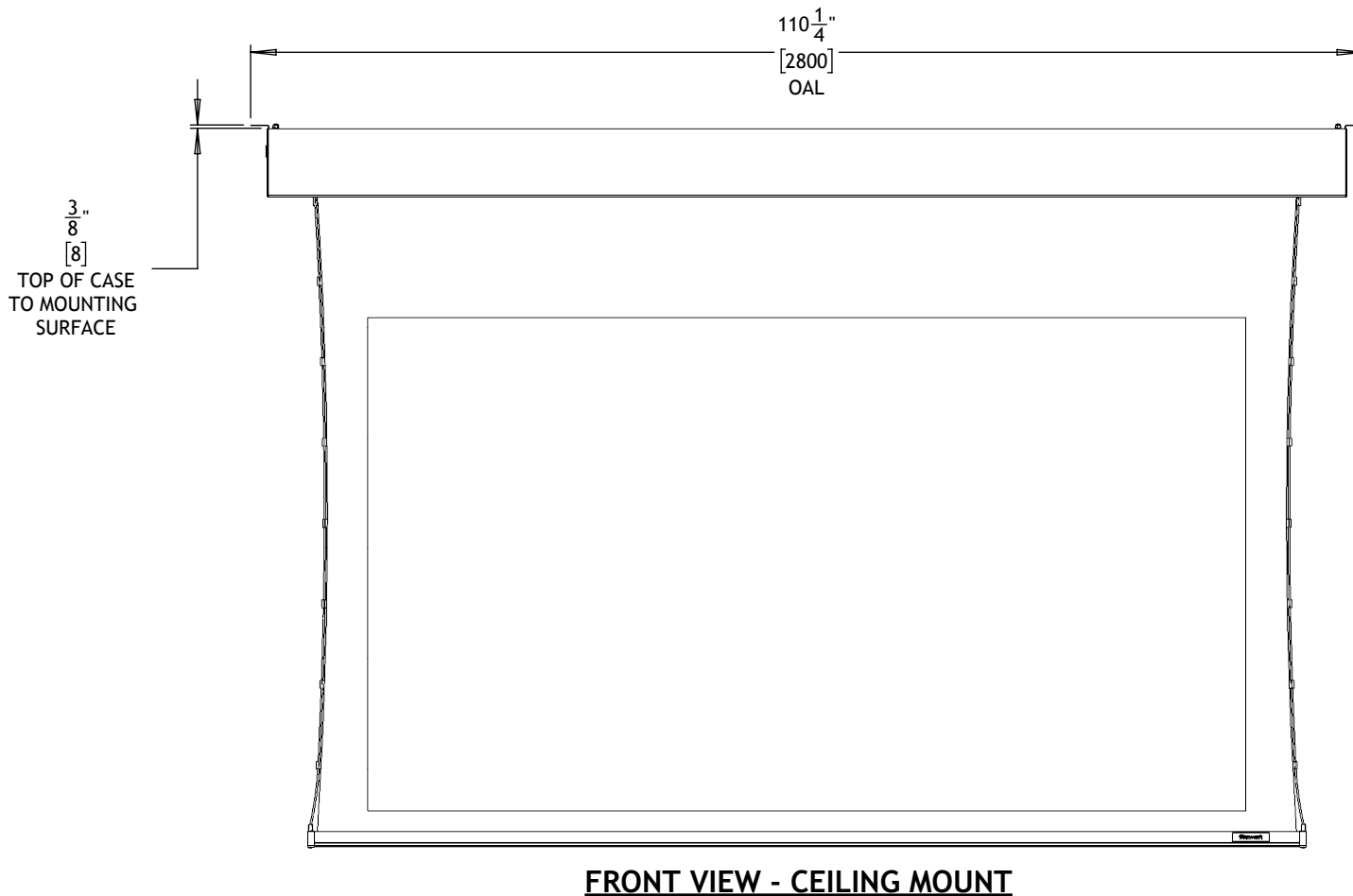
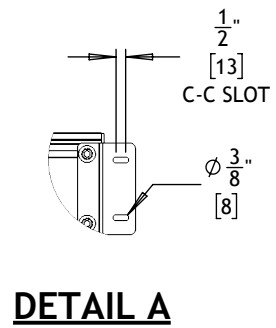
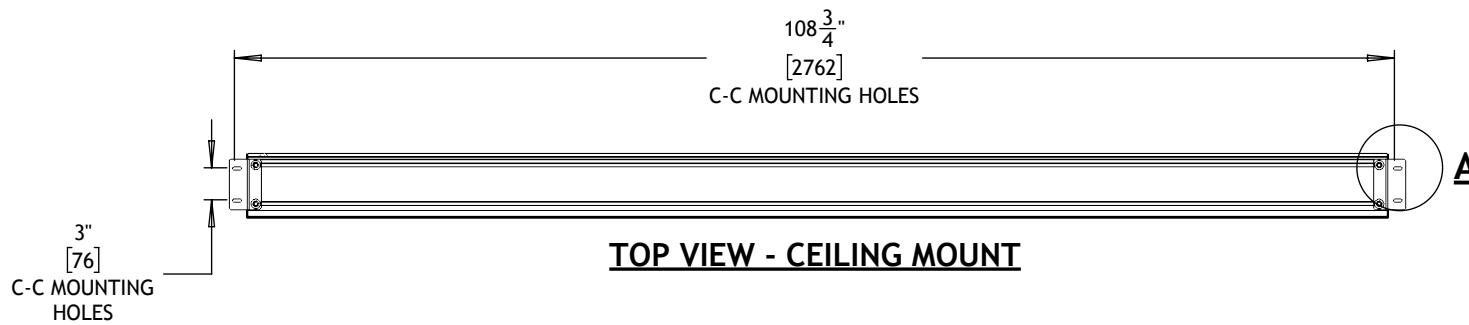
Date _____

Stewart
FILMSCREEN

1161 West Sepulveda., Torrance, California 90502
Office: (310) 784-5300 Customer Care (800) 762-4999
Fax (310) 326-6870

RESTRICTION: The information contained in this drawing is confidential and proprietary to Stewart Filmscreen Corporation. It shall not be disclosed beyond the client company, and shall not be duplicated, used, or disclosed in whole or in part for any purpose except to evaluate this proposal.

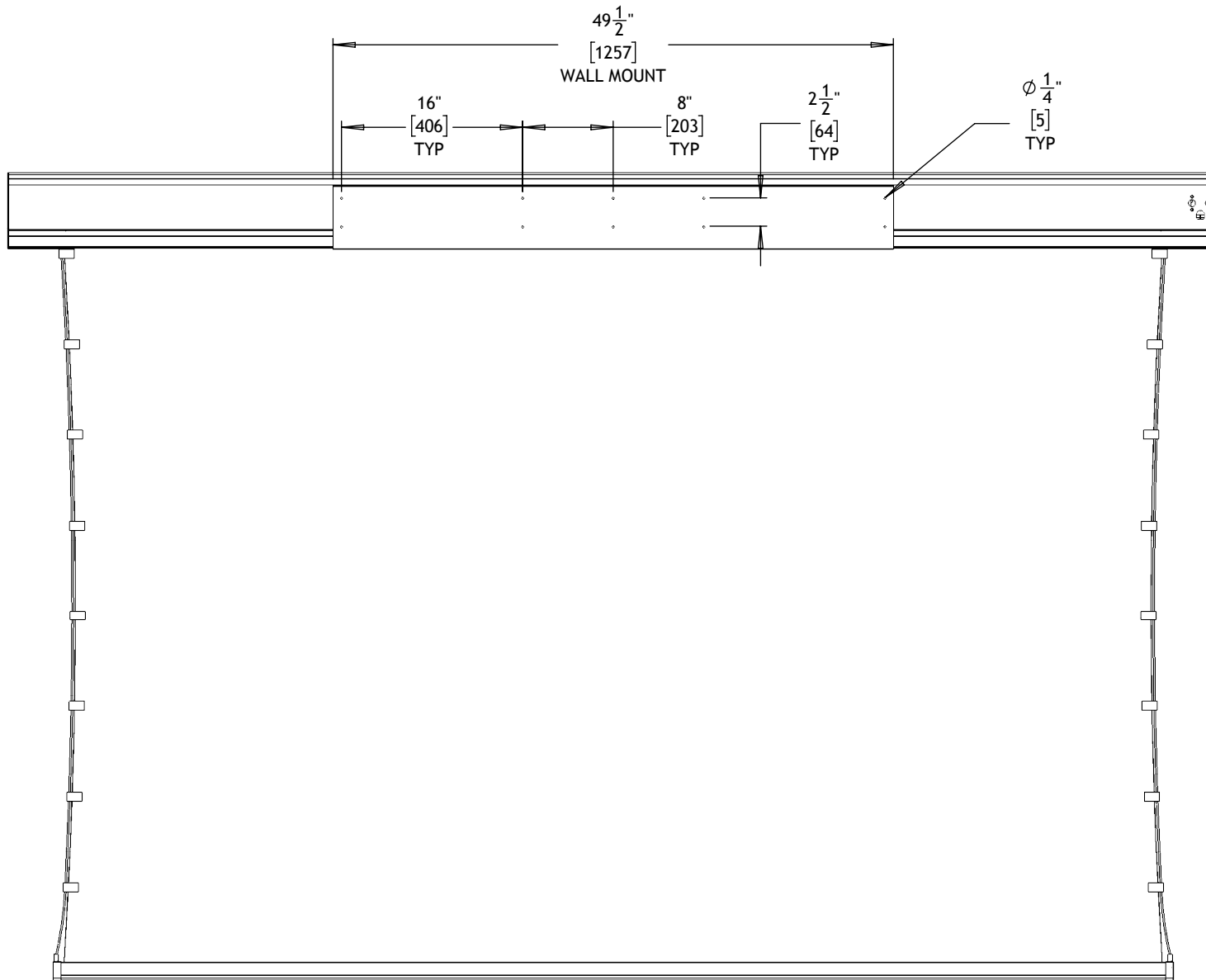
UNLESS OTHERWISE SPECIFIED	X / X	.XX	.XXX	ANGLE	APPROVAL	DATE	ASSEMBLY 00930 Cima BC
	1/8	.03	.005	±1°	DRAWN -	11/30/18	DESCRIPTION
DIMS ARE IN INCHES	MACHINED FILLETS .015 - .030			CHECKED			CIMA Below Ceiling
REMOVE ALL BURRS AND BREAK SHARP EDGES				APPROVED			
ENG REV -	SCALE 1:20		SHEET 1 OF 3	SIZE A	PART / MODEL# 00940-X100H		



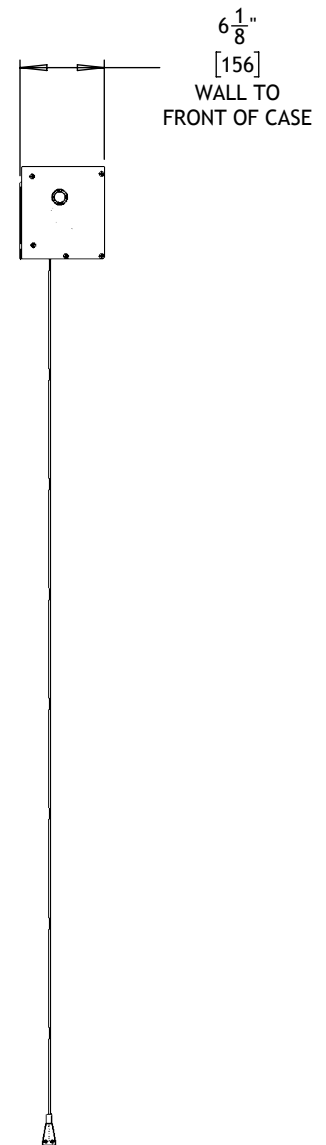
Stewart[®]
FILM SCREEN
1161 West Sepulveda., Torrance, California 90502
Office: (310) 784 - 5300 Customer Care (800) 762-4999
Fax (310) 326-6870

RESTRICTION: The information contained in this drawing is confidential and proprietary to Stewart Filmscreen Corporation. It shall not be disclosed beyond the client company, and shall not be duplicated, used, or disclosed in whole or in part for any purpose except to evaluate this proposal.

UNLESS OTHERWISE SPECIFIED	X / X	.XX	.XXX	ANGLE	APPROVAL	DATE	ASSEMBLY 00930 Cima BC
	1/8	.03	.005	±1°	DRAWN -	11/30/18	DESCRIPTION
DIMS ARE IN INCHES	MACHINED FILLETS .015 - .030			CHECKED			CIMA Below Ceiling
REMOVE ALL BURRS AND BREAK SHARP EDGES				APPROVED			
ENG REV -	SCALE 1:18		SHEET 2 OF 3		SIZE A	PART / MODEL# 00940-X100H	



BACK VIEW - WALL MOUNT



SIDE VIEW - WALL MOUNT

Stewart
FILMSCREEN

RESTRICTION: The information contained in this drawing is confidential and proprietary to Stewart Filmscreen Corporation. It shall not be disclosed beyond the client company, and shall not be duplicated, used, or disclosed in whole or in part for any purpose except to evaluate this proposal.

UNLESS OTHERWISE SPECIFIED	X / X	.XX	.XXX	ANGLE	APPROVAL	DATE	ASSEMBLY 00930 Cima BC
	1/8	.03	.005	±1°	DRAWN -	11/30/18	DESCRIPTION
DIMS ARE IN INCHES	MACHINED FILLETS .015 - .030			CHECKED			CIMA Below Ceiling
REMOVE ALL BURRS AND BREAK SHARP EDGES				APPROVED			
ENG REV -	SCALE 1:14		SHEET 3 OF 3		SIZE A	PART / MODEL# 00940-X100H	

1161 West Sepulveda., Torrance, California 90502
Office: (310) 784 - 5300 Customer Care (800) 762-4999
Fax (310) 326-6870